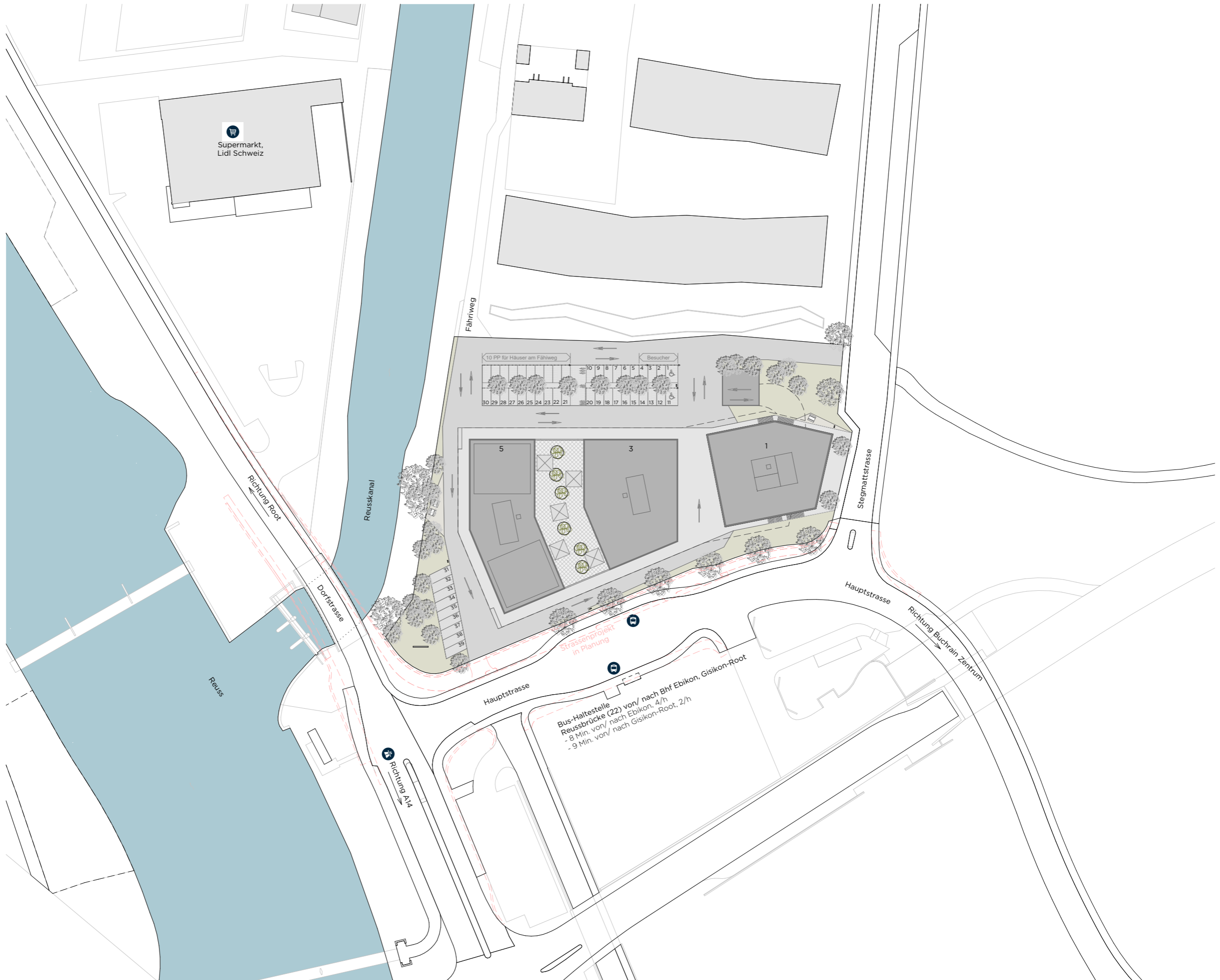
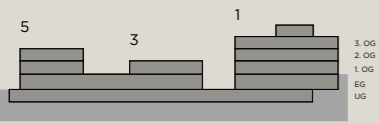
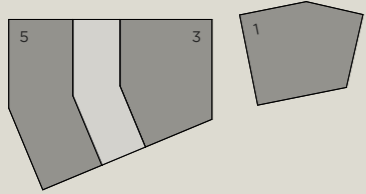
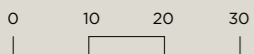


# UMGEBUNG

STEGMATTSTRASSE 1/3/5



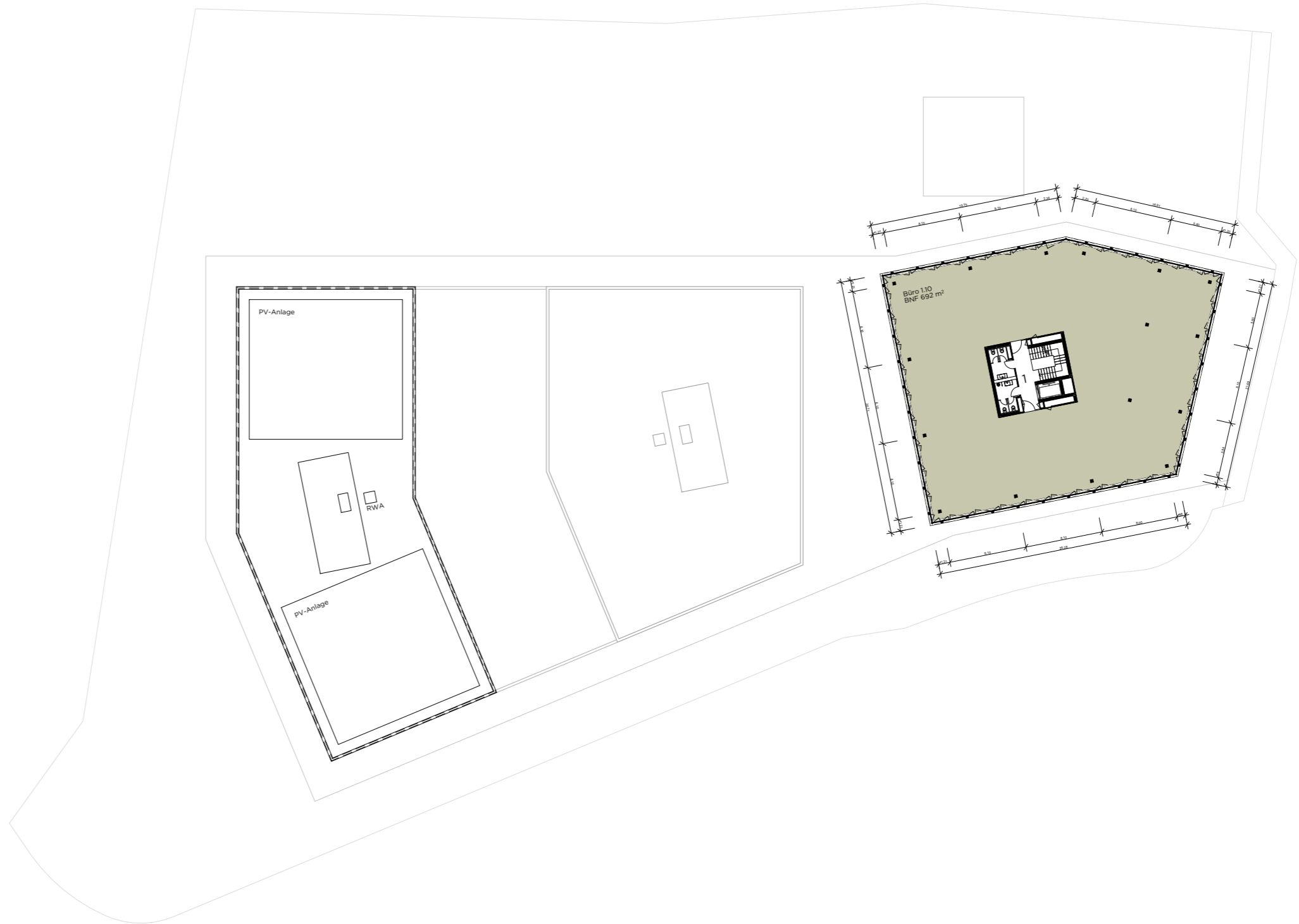
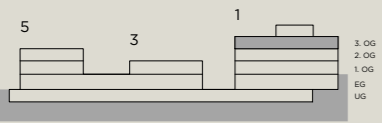
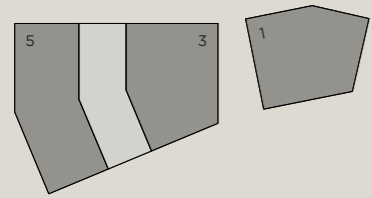
Masstab 1:1000





### 3. OBERGESCHOSS

STEGMATTSTRASSE 1/3/5



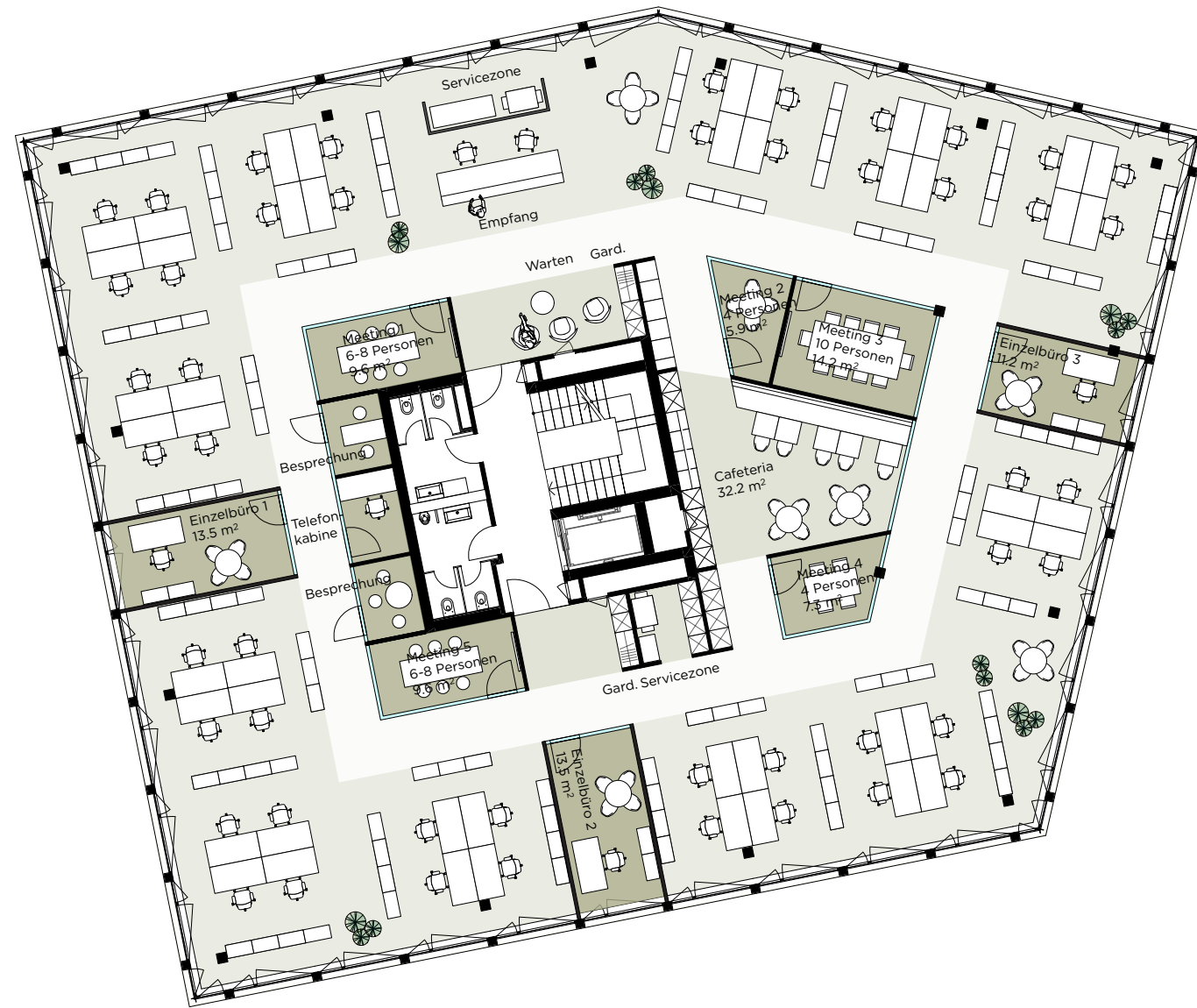
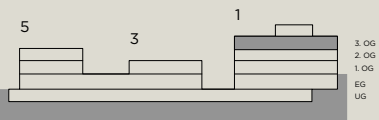
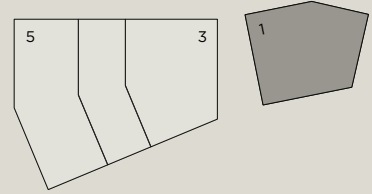
Massstab 1:500



### 3. OBERGESCHOSS

STEGMATTSTRASSE 1

Layoutvorschlag Büro 1.10

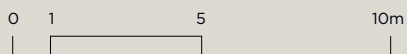


#### Raumprogramm Büro 1.10

1x	Openspace	48 AP
3x	Einzelbüro	3 AP
1x	Empfang	2 AP
1x	Sitzungszimmer gross à 10 Pers.	
6x	Sitzungszimmer klein à 2-6 Pers.	
1x	Telefonkabine	
2x	Service-Zone	
1x	Empfang / Wartebereich	
1x	Küche / Cafeteria	

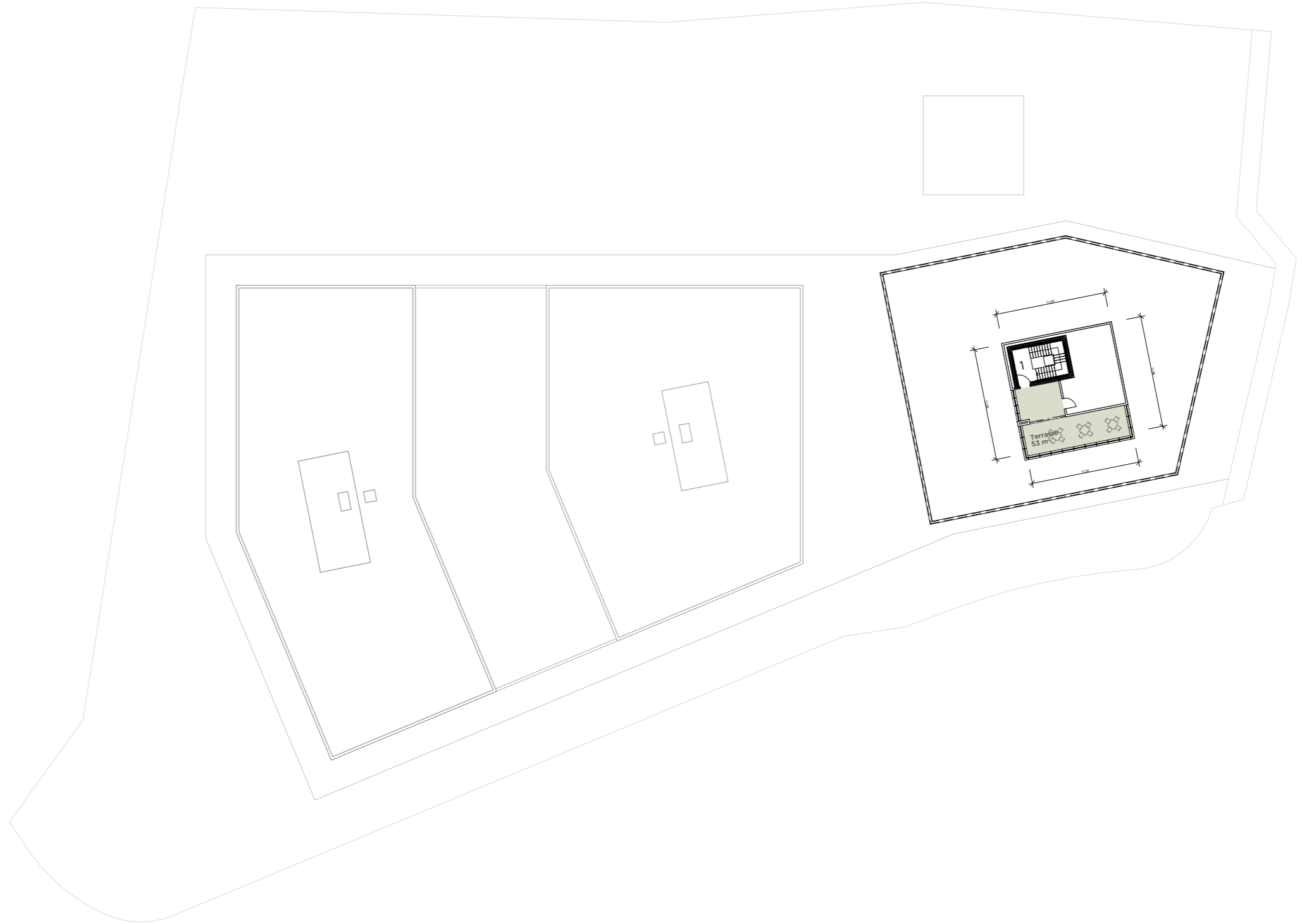
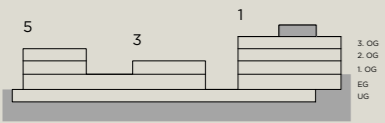
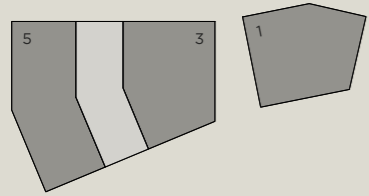
**Total 692 m<sup>2</sup> 53 AP**  
**13.1m<sup>2</sup>/AP**

Masstab 1:200



# DACHGESCHOSS

STEGMATTSTRASSE 1/3/5

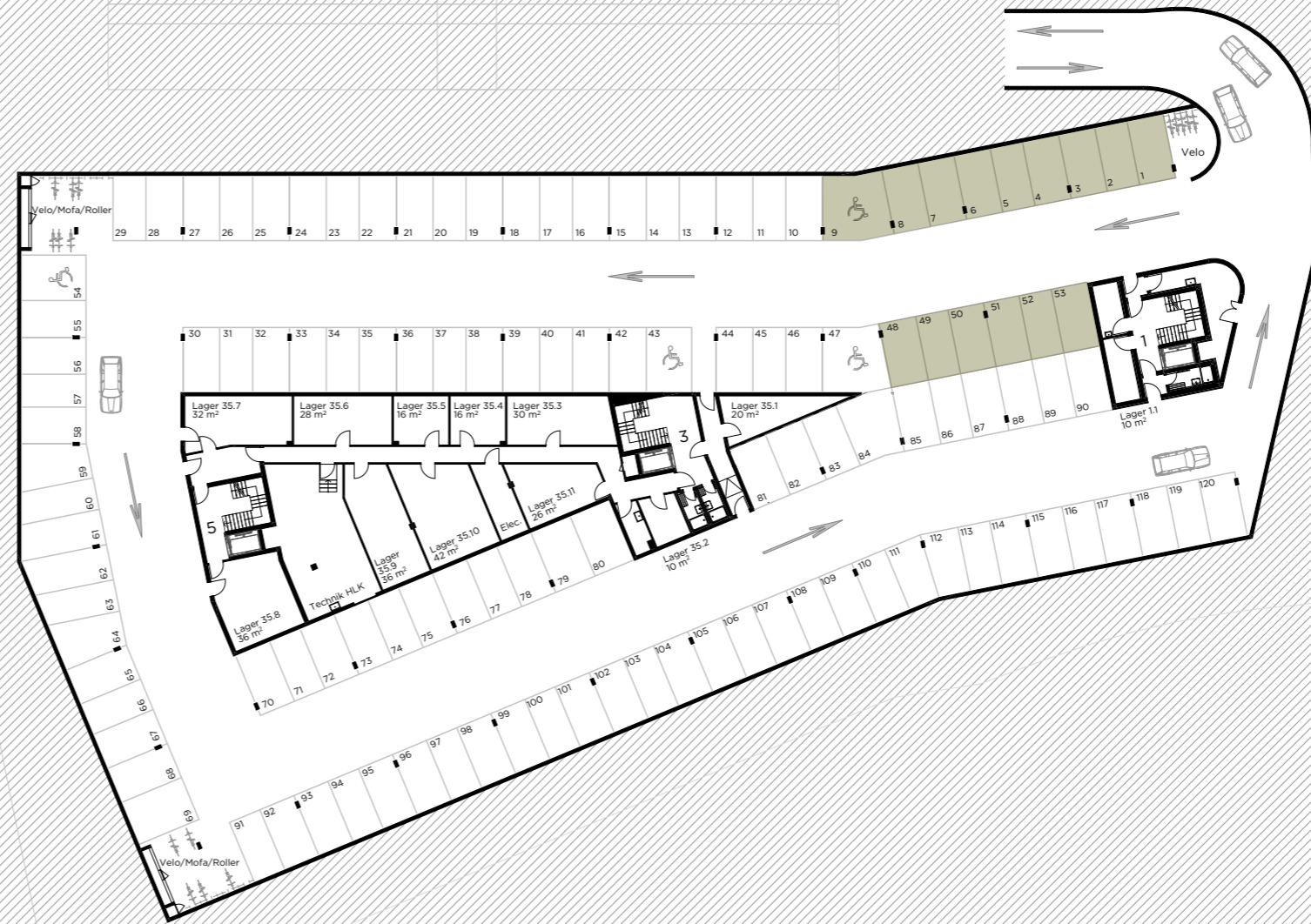
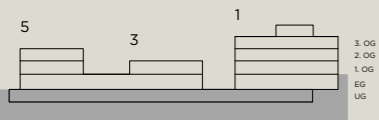
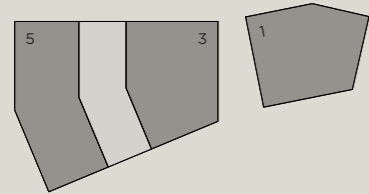


Masstab 1:500



# UNTERGESCHOSS

STEGMATTSTRASSE 1/3/5



11 PP überbreit: Nr. 9, 43, 47, 54, 69, 79, 80, 81, 82, 83, 84  
 6 PP überlang, 5.60m -6.10m und schmaler als 2.50m: 59-64  
 4 PP mit Stütze nicht nach VSS-Norm: 50, 51, 87, 88  
 6 PP schmaler als 2.50m: 108-113

Massstab 1:500

